

Talis
Single lever shower mixer for exposed installation
 Finish: **Chrome** Article Number: **32640000**



Description

product features

- 1 function
- centre distance: 150 ± 12 mm
- maximum flow rate at 3 bar: 26 l/min
- flow rate of hand shower at 3 bar: 16 l/min
- ceramic cartridge
- temperature limitation adjustable
- non-return valve
- with silencer
- hose connection DN15
- connection dimension: DN15
- min. operating pressure: 1 bar
- max. operating pressure: 10 bar
- connection type: s-shaped connections
- EPD Shower and Bath Faucets

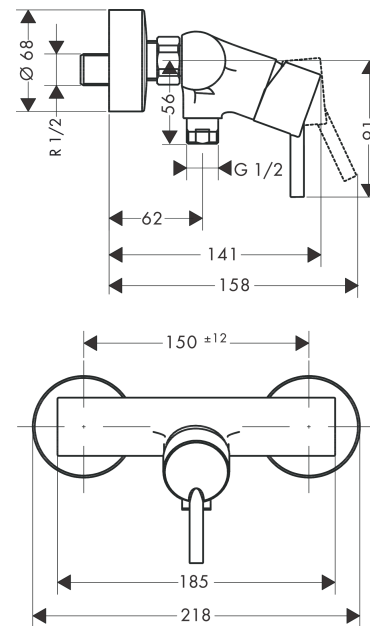
Certificates / Sustainability



Product image



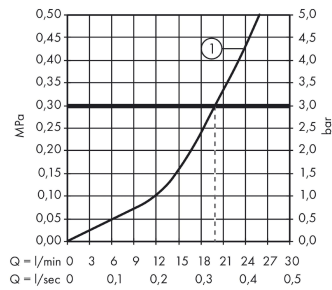
Scale drawing



Talis
Single lever shower mixer for exposed installation
 Finish: **Chrome** Article Number: **32640000**



Flowchart



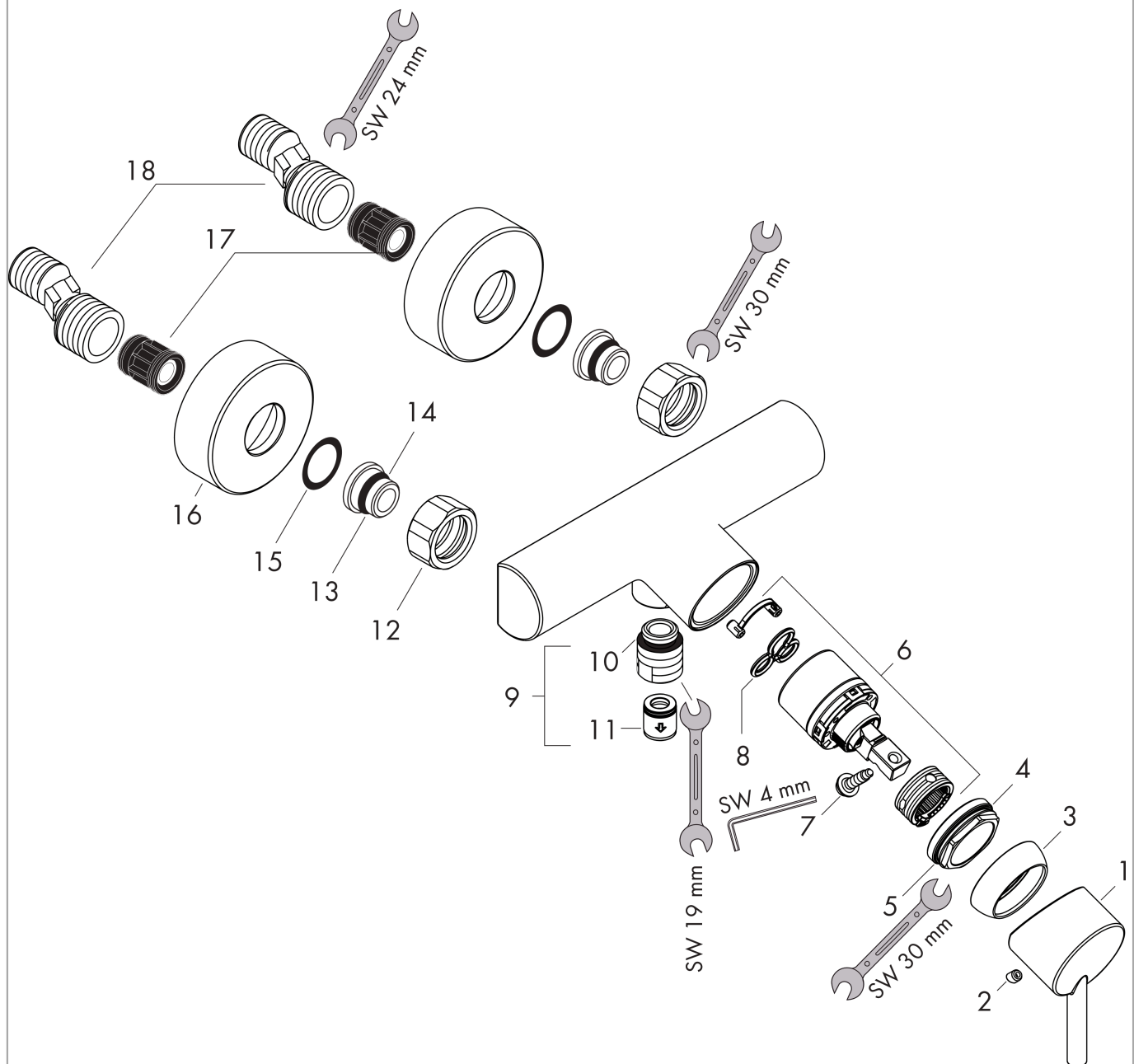
Shower outlet with 1B-resistance

Talis
Single lever shower mixer for exposed installation
 Finish: **Chrome** Article Number: **32640000**



Exploded Drawing

Year of production: **10/06 - 06/22**



Talis
Single lever shower mixer for exposed installation
 Finish: **Chrome** Article Number: **32640000**



Spare part list

Year of production: **10/06 - 06/22**

Pos.	Description	Article Number	PC	PU
1	handle	32096000	10	1
2	screw cover	96338000	1	1
3	flange	97406000	6	1
4	nut	97209000	5	1
5	O-Ring 32x2	98193000	1	1
6	cartridge, assy	92730000	11	1
7	locking screw for handle	95140000	2	1
8	seal	95008000	3	1
9	Hose Connection	96044000	7	1
10	O-ring 14x2	98129000	1	1
11	set of non return valves DW 15	94074000	5	1
12	set of nuts	96157000	8	1
13	connecting thread	97220000	5	1
14	O-ring 15x2	98163000	1	1
15	filter packing	96922000	3	1
16	escutcheon Ø 68 mm	96467000	6	1
17	noise reduction	96429000	2	1
18	set of S-unions (±12 mm)	94140000	10	1
a	set of S-unions (±32 mm)	98592000	9	1