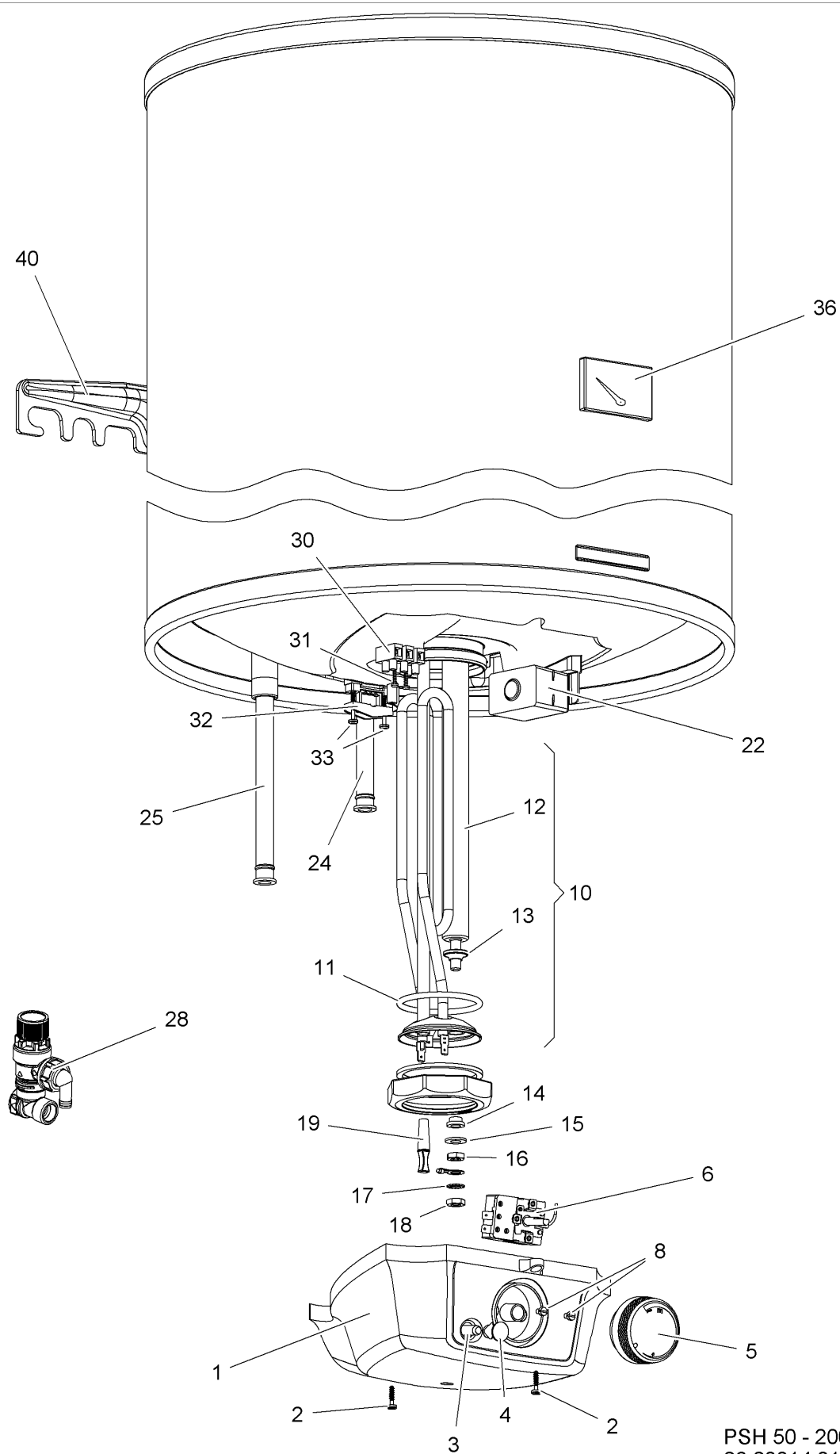


image+spare part list - PSH 50 - 200 CLASSIC



PSH 50 - 200 Classic
86 80014 01 / 001

image+spare part list - PSH 50 - 200 CLASSIC

Po s.	Hint	Mat. no.	Replaced by	Gr p.	Description	Valid from	Valid until	CW	Quant ity
1		315037		1	Cap EOv Trend				1
2		066700		9	Special-scr. 4x16-10.9-T20-A2K				2
3		286080		1	Glow lamp SL 656 ZAK				1
4		299826		1	Cover glow-lamp				1
4X		269152		9	Gasket signal lamp				1
5		318106		1	Button asm.				1
6		324280		1	Thermostat GTLH 5				1
6	replac ed	286081	324280	1	Capillary thermostat KT 165 AVB				1
8		268059		9	Screw M4x6 B DIN7985-4.8 A3F2				2
10A		315028		1	Flange asm. EOv 50 Trend				1
10B		315029		1	Flange asm. EOv 80 Trend				1
10C		315030		1	Flange asm. EOv 100 Trend				1
10D		315031		1	Flange asm. EOv 120 Trend				1
10E		315032		1	Flange asm. EOv 150 Trend				1
10F		315033		1	Flange asm. EOv 200 Trend				1
10X		292907		9	Resistor compl.				1
11		315024		9	Flange gasket				1
12A		286092		2	Anode D=21,3x263/288				1
12B		286093		2	Anode D=21,3x320/345				1
12C		286094		2	Anode D=21,3x448/473				1
12D		286095		2	Anode D=21,3x586/611				1
12E		286096		2	Anode D=21,3x683/708				1
12F		286143		2	Anode D=21,3x768/793				1
13		286097		2	Gasket the anode				1
14		270957		2	Bushing distance pl.				1
15		005776		2	Washer 125-A 8,4- 140HV-ZN				1
16		005687		2	Nut I4035-M 8-05 -ZN				1
17		096366		1	Washer 6797A 8,4 ST-Zn				1
18		005687		1	Nut I4035-M 8-05 -ZN				1
19		268821		1	Rubber bolt				1
22		298433		1	temperature limiter 92°C				1
24		288834		1	Adapter inlet 1/2"x134 plastic				1
25A		315002		1	Adapter outlet 1/2" plastic				1
25B		315009		1	Adapter outlet 1/2" plastic				1
25C		315020		1	Adapter outlet 1/2" plastic				1
25D		315025		1	Adapter outlet 1/2" plastic				1

image+spare part list - PSH 50 - 200 CLASSIC

Po s.	Hint	Mat. no.	Replaced by	Gr p.	Description	Valid from	Valid until	CW	Quant ity
25E		315027		1	Adapter outlet 1/2" plastic				1
25F		315039		1	Adapter outlet 1/2" plastic				1
28		314989		1	Safety valve G 1/2				1
30		309566		1	Terminal block 10E/3				1
31		269981		9	Screw DIN 7981 2,9x22				2
32		041981		1	CABLE CLAMP				1
33		280769		9	Special screw 3, 5x25-10.9-TX20-A2B				2
36		321596		1	Temperature indicator				1
40		098011		1	Not available as a single part				1
					In addition available				

	request	321318		1	Install.instru. PSH Classic ml				1
	request	325867		1	Install.instru. PSH classic ara				1
	request	332334		1	Install.instru. PSH Classic hr				1
		315042		1	Cable loop				1